

## How do I know if my swimming pool has a leak?

### Pool leak symptoms resulting from water loss

The most common reason for suspecting a leak in your pool is the observation of a **larger than normal drop in water level**.

This water loss may not be obvious, so keep your eyes open for other symptoms that may be leak related:

- ☐ Increased chemical demands (to treat new water that is added to the pool)
- ☐ Increased water bills
- ☐ Cracks in the deck resulting from settling earth
- ☐ Unexplainable evidence of water outside the pool

If you notice any of these symptoms monitor the water level.

Keep in mind that an uncovered pool will also lose water to evaporation. Evaporation is dependant on a variety of environmental conditions and can vary greatly from pool to pool and even from season to season.

A simple way to account for evaporation and confirm a leak is to do a Bucket Test.

**Seek a Leak** can advise you on the best ways to minimise evaporation.

**Call  
Steve  
on  
0400 569 097**

### Air in the Pump or Blown into Pool

A leak in the suction side plumbing (from skimmers and main drains to equipment), may pull air into the lines where it will show up in the pump or be blown back into the pool through the returns. This symptom can also be caused by a blockage or obstruction in the suction lines. Either situation will require immediate professional attention to avoid causing mechanical damage to your pool equipment.

A **Seek a Leak** qualified pool leak professional from your area will be able to provide more information to help you determine if the symptoms you have observed are indeed leak related.

## Problems That a Swimming Pool Leak Can Cause

These problems can be more than just an inconvenience. An un-repaired hole the size of a pencil tip can result in hundreds of litres of water loss per day. In addition to the replacement cost of the water, a leak will increase the chemical demands of your pool, and may lead to more serious structural and mechanical problems. Fortunately, effective location and repair solutions are available.



## Can I find the swimming pool leak myself?

There are several areas where your swimming pool may leak:

- ☐ At fittings (skimmers, returns, lights, etc)
- ☐ In the shell or liner of the swimming pool
- ☐ In the pool's underground plumbing system

Any leaks in the underground plumbing will require professional attention; however, you may be able to find obvious leaks in other parts of the pool using simple visual inspection techniques.

Check for signs of moisture or drips around the pool equipment. Also check to make sure that your multi-port valve is not positioned to allow water loss to waste.

Underwater leaks in the pool shell or fittings can be identified with a dye test. A Dye Tester allows placement of a small amount of colorant near (within 5mm) a suspected leak. Dye will be drawn out of the pool where there is a leak. Start by testing suspect areas such as cracks in the tile or plaster, and places where return fittings, skimmers or stairs join to the pool shell.

Much of this testing can be done from the pool edge; however, you will eventually have to get into the pool with a dive mask to completely inspect the structure of the pool.

Don't be discouraged if you can't find anything; most leaks are not visibly obvious, or may be in parts of the pool (such as the underground plumbing system), that are inaccessible. A **Seek a Leak** qualified pool leak professional utilising specialized equipment should be able to find a leak anywhere in your pool within an hour or two (some complicated jobs may take longer).



## ***How will a Seek a Leak pool leak professional find my swimming pool leak?***

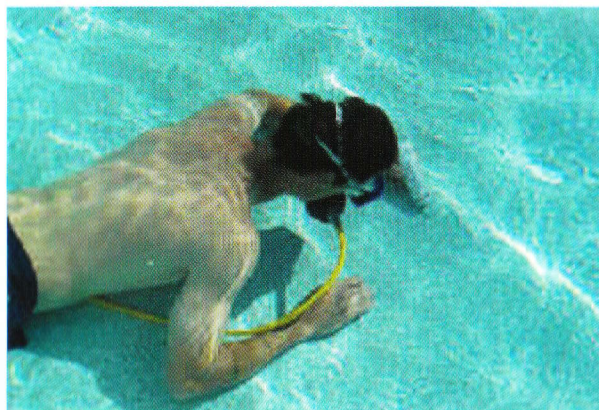
First they will ask you questions about your pool or spa, when you first noticed leak problems, and if possible how much it is leaking (based on the results of a bucket test). The more information you can give them about your swimming pool leak the better.

Most jobs will then involve a pressure test of your plumbing lines to confirm whether the leak is in the plumbing or the shell of the pool. Based on the results of the pressure test, the technician may then use a variety of sophisticated electronics or diving equipment to pinpoint the pool leak.

- ☐ Listening Devices are used to pinpoint underground plumbing leaks
- ☐ Hydrophones, special dyes, and SCUBA diving equipment are used to find leaks in the shell of plaster and concrete pools

Once the pool leak is found the **Seek a Leak** professional will provide you with several repair options that they will perform themselves or refer to someone else.

***Call  
Steve  
on  
0400 569 097***



***Call  
Seek-a-Leak  
On  
0400 569 097***

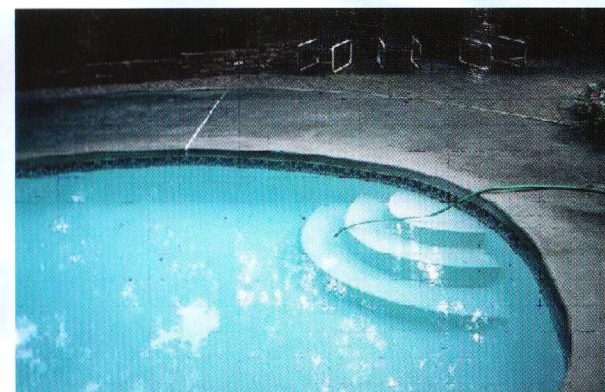


### **Seek-a-Leak**

A.B.N.36 051 881 237  
30 Weranga Place  
Parkinson Qld 4115  
Phone 07 3272 5575

## **Seek-a-Leak**

***Has your  
swimming pool  
sprung a leak?***



***Under water or  
under concrete  
we'll find it.***

***0400 569 097***